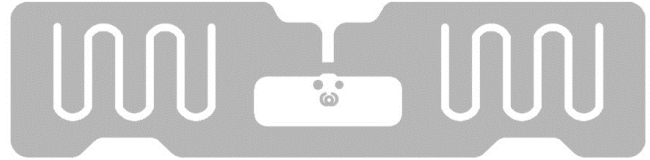


INVENGO Lombard Dry Inlay



IMPINJ M730

About Invengo's Lombard

Invengo's Lombard dry inlay, equipped with Impinj M730 IC's, is a high-performance passive RFID tag that conforms to the ISO/IEC 18000-6C standard. With a frequency range covering 840 MHz to 960 MHz, the Lombard exhibits high sensitivity and strong anti-interference capabilities, making it well-suited for smart healthcare management, logistics, warehouse management, and retail applications.



Invengo – the global RFID technology provider – is a leading developer and manufacturer of high quality, intelligent RAIN RFID and HF/NFC connectivity solutions and consumables (tags & inlays) utilized in the Internet of Things. With a focus on RFID innovation, Invengo has created a leading product line in retail, (industrial) laundry, library, (public) transportation, healthcare, and many other industries.

Invengo Technology Pte. Ltd. (SG) is the International Headquarters of Invengo Information Technology Co. Ltd, listed on Shenzhen Stock Exchange (SZSE: 002161.SZ). Employing over 600 people globally, Invengo is one of the largest publicly traded, RFID / IoT oriented companies in the world.

Features

- High sensitivity
- Strong anti-interference capability
- Outstanding multi-tag reading and writing performance
- ISO/IEC 18000-6C system support

Industry

- Smart Healthcare
- Logistics
- Warehouse
- Retail

Product Specifications

RFID

Product Specifications	ISO/IEC 18000-6C (EPCglobal C1G2)
Integrated Circuit (IC)	Impinj M730
Operating Frequency	840 MHz to 960 MHz
Writing distances	0m ~ 4.5m
Reading distances	0m ~ 9m
TID	96 bits
EPC	128 bits

Environmental

Operating Temperature	-40 °C to +85 °C
Storage Temperature	-40 °C to +85 °C
Operating humidity	20%~90%RH
ESD	±2000V peak
Data retention	10 years
Endurance	100,000 cycles

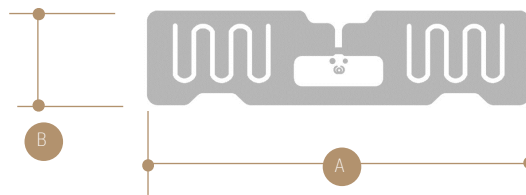
Dimensions

Antenna Size (A x B)	72.00mm x 17.50mm
Web Width (E)	82.00mm
Pitch (F)	22.45mm

Order Information

Product code	XC-TF8079-A-C113
Packaging	---
Box Size	---
Weight	---

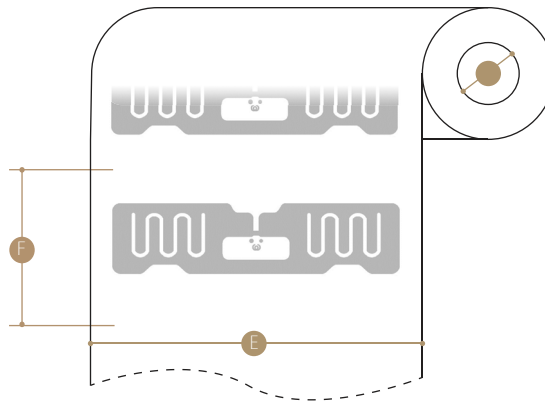
Inlay Design



Inlay Stackup



Winding / Dimensions



APAC / EMEA
 Invengo Technology Pte. Ltd
 9 Kallang Place
 #07-01 Singapore 339154

Office: +65 6702 3909
 sales@invengo.com

Americas Sales
 Invengo Technology Corp.
 536 Silicon Drive, Suite
 100 Southlake Texas 76092
 United States of America

Office: +1 919 523 0919
 sales.americas@invengo.com

Global Library Solutions
 FE Technologies Pty Ltd
 129 Fyans Street
 SOUTH GEELONG Australia
 3220

Office: +1 300 731 991
 enquiries@fetechgroup.com

Global Handhelds Solutions
 ATID CO.,LTD.
 #603, 184, Gasan Digital 2-Ro,
 Gumcheon-Gu, Seoul,
 Korea, 08501

Office: +82 544 1436
 inquiry@atid1.com